

Model IDS649

SDS LOAD CELL

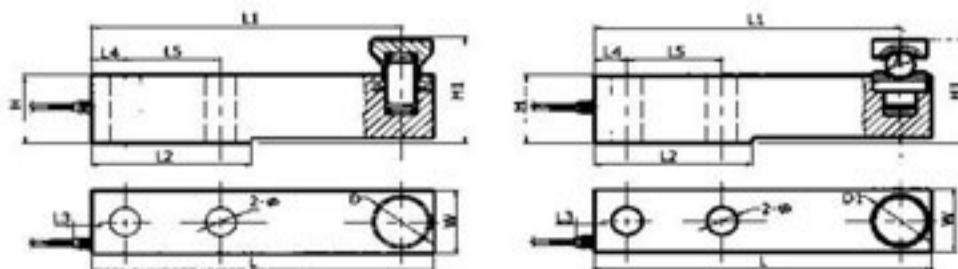


Specification

Item \ Parameter	C3	Unit
Rated load (E _{max}):	0.5, 1, 2, 3, 5, 8, 10, 20	t
Maximal numbers of load cell verification Intervals (N _{ic}):	3000	d
Minimum load cell verification intervals Intervals (V _{min}):	0.01	% of rated load
Rated output (C _n):	2.0 ± 0.1%	mV/V
*Combined error:	0.015	±% of rated output
Temperature effect on sensitivity (T _{kc}):	0.0012	±% of rated output/°C
Temperature effect on zero balance (T _{k0}):	0.0008	±% of rated output/°C
Zero balance :	1.0	±% of rated output
Input resistance (R _{ic}):	385 ± 5	Ω (Ohms)
Output resistance (R _o):	351 ± 2	Ω (Ohms)
Insulation resistance :	≥ 5000	MΩ (Mega-Ohms)
Safe overload :	150	% of rated capability
Ultimate overload :	300	% of rated capability
Operating temperature range :	-20~+70/-20~+160	°C / °F
Recommend excitation :	8~12	V (DC or AC)
Maximum excitation :	18	V (DC or AC)
Material of elastomer :	Alloy steel/ Stainless steel	
Protection class :	IP67/IP68	

All specifications listed subject to change without notice.

Dimensions



CAP./SIZE	L	L1	L2	L3	L4	L5	H	H1	φ	D	D1	W	A
0.5, 1, 2, 3t	203	181	95	24	19	64	43	57.9	13	35	39	37	15.9
5, 8t	235	213	110	24	23	66	52	78.9	21	42	44	48	25.48
10t	279	247	133	24	25	82	67	127.7	28	57	58	60	38.1
20t	318	280	153	24	32	89	82.5	143.5	34	70	69	70	50.8

Wiring Schematic Diagram (Balanced bridge configuration)

